

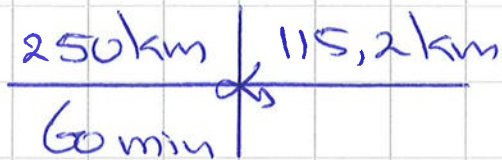
1 a/b Chateaulin, Guimper, Lorient
c 135°

2 a

b Guimper

c $1 \text{ cm} \hat{=} 16 \text{ km}$

Abstand = $7,2 \times 16 = 115,2 \text{ km}$



Hef dauert $115,2 \times 60 : 250 \approx 27,6 \text{ min.}$

3 a/b 45°

c Abstand = $4,1 \times 16 = 65,6 \text{ km}$

